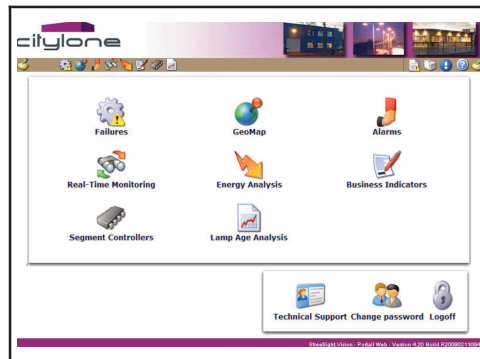


## Streetlight Monitoring Solution

A secured software - 100% Web - dedicated to control and monitor the streetlight network, at any time and from anywhere in the city.



Street lighting controllers, designed by Citylone, can be managed by the Streetlight.Vision solution.

They communicate on the existing electrical network (powerline communication) with the LonWorks® technology.

The solution allows to control each individual streetlight, in a real time and from any workstation; to track the energy consumption in a zone; to reduce maintenance efforts with failures and alarms detection... While improving quality of street lighting.

It is also possible to control other devices such as videocamera, parking billboards, festive lighting...

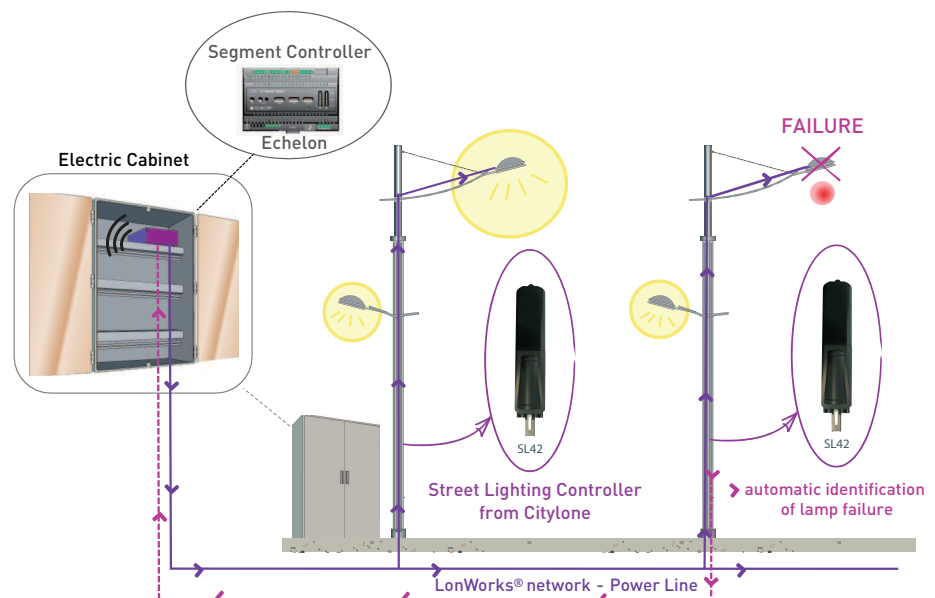
### Main functions

- **Dimming of magnetic or electronic ballasts (ON/OFF, 1-10V, DALI) and LEDs streetlights**
- **Automatic detection of all lamps and ballasts failures** to reduce onsite operations and citizen's incoming calls and complaints.
- **Energy consumption reporting:** calculation of energy and associated CO<sub>2</sub> savings (up to 50%).
- **Use of the existing electrical network** to control videocamera and collect environmental data.

### Overview

#### 1/ In the street...

**Communication: LonWorks® network - Powerline**



## 2/ On the server...

### GPRS, ADSL, Wifi or Radio connection: failures and alarms reporting - sent to the workstation

- The software is installed in the end-user offices or web-hosted by Streetlight.Vision.
- Compatible with other software applications [such as Geographical Information System, Maintenance System...]

MAT	Street 1	Street 2	Status	Alerts	Voltage	Timestamp
MAT 3	3.Street 1 Milton Keynes East	Street 1 Milton Keynes East	Red	Ballast Comm Critical Error	1067.0	2007-05-03 04:30:00.0
MAT 11	11.Street 2 Milton Keynes East	Street 2 Milton Keynes East	Red	Night Failures Brown Out Critical Error	1067.0	2007-05-03 04:30:00.0
MAT 5	5.Street 1 Milton Keynes East	Street 1 Milton Keynes East	Red	Night Failures High RMS Voltage Low RMS Voltage Brown Out	1067.0	2007-05-03 04:30:00.0
MAT 7	7.Street 2 Milton Keynes East	Street 2 Milton Keynes East	Red	Night Failures	1067.0	2007-05-03 04:30:00.0
MAT 1	1.Street 1 Milton Keynes East	Street 1 Milton Keynes East	Green	-	1067.0	2007-04-08 22:33:33.0
MAT 2	2.Street 1 Milton Keynes East	Street 1 Milton Keynes East	Green	-	1067.0	2007-04-08 22:33:33.0
MAT 4	4.Street 1 Milton Keynes East	Street 1 Milton Keynes East	Green	-	1067.0	2007-04-08 22:33:33.0
MAT 6	6.Street 1 Milton Keynes East	Street 1 Milton Keynes East	Green	-	1067.0	2007-04-08 22:33:33.0
MAT 7	7.Street 1 Milton Keynes East	Street 1 Milton Keynes East	Green	-	1067.0	2007-04-08 22:33:33.0
MAT 8	8.Street 1 Milton Keynes East	Street 1 Milton Keynes East	Green	-	1067.0	2007-04-08 22:33:33.0
MAT 9	9.Street 1 Milton Keynes East	Street 1 Milton Keynes East	Green	-	1067.0	2007-04-08 22:33:33.0
MAT 10	10.Street 1 Milton Keynes East	Street 1 Milton Keynes East	Green	-	1067.0	2007-04-08 22:33:33.0
MAT 11	11.Street 1 Milton Keynes East	Street 1 Milton Keynes East	Green	-	1067.0	2007-04-08 22:33:33.0
MAT 12	12.Street 1 Milton Keynes East	Street 1 Milton Keynes East	Green	-	1067.0	2007-04-08 22:33:33.0
MAT 13	13.Street 1 Milton Keynes East	Street 1 Milton Keynes East	Green	-	1067.0	2007-04-08 22:33:33.0

## 3/ For the End-User...

### Local network or secured web

Powered by STREETLIGHT VISION

Streetlight.Vision - Portal Web - version 4.00 Build R200902110943

- Real time control: allows streetlights control (individually or by group).
- User friendly configuration including schedulers.
- Lighting dimming depending on time schedules.
- Failure detection and analysis, alarm management.
- Historical data and behavior of each lamp - displayed at any time.
- Calculation of energy consumption and energy savings (kWh & CO<sub>2</sub>).

More information on [www.streetlight-vision.com](http://www.streetlight-vision.com)

ZA Les Andr s BP5 - 69126 BRINDAS - FRANCE / Tel: +33 (0)4 78 45 65 65 / Fax: +33 (0)4 78 45 22 33 / [www.citylone.com](http://www.citylone.com)