



Smart city & smart lighting

SMARTLIGHTING - BOX

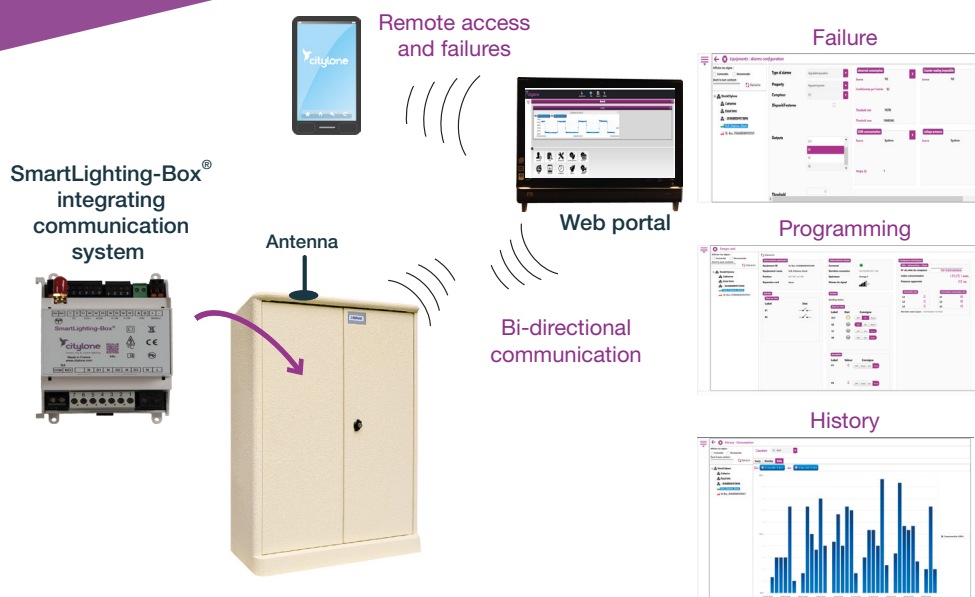
Connected cabinet lighting management solution

The **SmartLighting-Box®** is a cabinet lighting management solution, all in one, simple and connected, which manages alarms on a web portal.

- Energy savings
- Innovative astronomical clock
- Simple but efficient management of critical failures



The **SmartLighting-Box®**,
all in one
cabinet solution,
usual voltage,
which integrates an
**astro-optimized
programmable clock**,
a **bi-directional
communication system**
which manages failures
and a **supervision
web portal**



A simple and efficient way
to know **critical failures**
and lighting consumptions



Energy savings according to
your parametring choices



An **innovative astronomical clock**
to manage cabinet lighting
according to your needs



Go further with energy savings
at group of lightings points

FEATURES SMART-LIGHTING BOX 2

✚ **Mail/SMS failure sending:** loss of mains (sending of an alert even if the cabinet is not powered anymore), door opening, branch who did not switch on...

✚ **Remote metering** if your meter is equipped with appropriate output: low consumption failure, high consumption, network leak...

✚ **Integrated modem** with GSM modem / LoRaWAN (868Mhz) or other networks (on request) - supervision system to be added with LoRaWAN network

✚ **Remote access on a simple and intuitive web interface:** installations status, calendar for programming, data history (which can be exported in spreadsheet format), users management...

✚ **Astro-optimized clock** for programming and control of **4 different lines on dusk hours or fixed hours** (according to references) : **astronomical parametering** (offset according to location, season) and **automatic calculation of lighting hours** (instantaneous display of lighting hours according to chosen parameters). Clock is integrated into SL-Box locally, it synchronizes with communication system in order to prevent time drift. If communication is cutted, system will keep on working on current programming. At the same time, an alert 'Loss of communication' will be sent through the supervisor (and/or by email)

✚ Solution can be **interfaced with GIS softwares** (on study)

Option with additional material (*please consult us*):

✚ *Management & dimming of group of lighting points (with SLBox 3)*

✚ *Remote metering with additional meter* (if your installed meter is not compatible)

✚ *Addition of input/output modules* to increase the number of lighting points or command other elements of the cabinet

✚ *Interface with various sensors such as presence sensor*

RANGE

Features	SL BOX 2	SL BOX 3 (SL BOX 2 + SL-EASY)
GSM/LoRaWAN communication	✓	✓
Failures	✓	✓
Web interface	✓	✓
Remote metering via counter	✓	✓
Programmable astronomical clock	✓	✓
PLC group management		✓
Dimming		✓
Presence detection		✓
GIS interface	✧	✧
Other equipments	✧	✧

✓ Included feature

✧ According to project and equipment (please consult us)



ADVANTAGES



Complete, simple and integrated solution, one single product integrating modem, interface, astronomical clock and control (according to versions)



Innovative lighting management, astro-optimized : with dedicated algorithm which integrate GPS cabinet coordinates, period of the year and display of planed lighting hours with the chosen parameters



Management of all cabinets from a unique interface



Lighting management adapted to your needs thanks to a programming calendar for the whole year



Consumption control on the cabinets



Local or remote control in real time thanks to the screen or the web portal accessible from a computer, a phone, a tablet... connected to internet



Allow diagnosis of the cabinet and optimization of maintenance



Simple but efficient energy savings



Evolving cabinet management equipment towards lighting point management : adaptable according to your needs



First step of the Smart City thanks to management of other element of the city



SMARTLIGHTING-BOX® MODULE CHARACTERISTICS

Material	PC V0
Dimensions	71 x 90 x59 mm (4 rail DIN modules)
Mecanical protection	IP2X
Powering	95 to 265 VAC / 50 to 60Hz
Modem	Integrated
	Quadri band : 850/900/1800/1900 Mhz or LoRaWAN
	Antenna provided
	Operating condition to be validated according to network coverage
Installation	On Din rail in the cabinet
Storage temperature	-25°C to +75°C
Operating temperature	-25°C to +60°C
Humidity	95 %

SL-Easy and lighting point controllers : please refer to specific documentation
Other modules (meter, gateway, sensors...) : please consult us



NORMS

DIRECTIVE DBT 2014/35/UE « LOW TENSION »
DIRECTIVE CEM 2014/30/UE « ELECTROMAGNETIC COMPATIBILITY »
DIRECTIVE 2011/65/UE "ROHS DIRECTIVE"
GSM phase 2/2+ : Class4 (2W@850/900 Mhz) / Class 1 (1W@1800/1900 Mhz)



REFERENCES

References	Description		
Material			
SLBox 2	SmartLighting-Box® 2 -GSM or -LR	Alarm and remote lighting + web interface	+ remote metering : with additional meter if yours is not compatible (TL-CT1)
SLBox 3	SmartLighting-Box® 3 -GSM or LR	Alarm and remote lighting + web interface + lighting point management with SL-Easy + app's + lighting point controllers)	
Subscription			
CL-SLB-AB-1		Subscription / renewal subscription SmartLighting-Box® = 1 year for GSM version	
Assistance / Training			
CL-AI SLB		Onsite assistance one day - SmartLighting-Box® Solution	
CL-Niv4		Administrator and user training - SmartLighting-Box® Solution 1day	

SmartLighting-Box® functioning is subject to network coverage of location of the installation of your SmartLighting-Box® .

LR = LoRaWAN network

For GSM, supervisor is furnished by Citylone (with communication subscription)

For LoRaWAN supervisor to be added to the system (not provided by Citylone)

